

Exploration Discovered

An Opportunity for Local Benefits
across Manitoba

May 2024



Report Structure

SECTION ONE
Project Design

SECTION FOUR
Unlocking the Potential:
Manitoba's World Class
Decarbonization Resources

SECTION TWO
Key Insights

SECTION FIVE
A Voice of Confidence in
Manitoba

SECTION THREE
The Global and
Canadian Context

SECTION SIX
Profiles

Exploration Discovered

- Manitoba's Prospectors and Developers Association (MPDA) launched **Exploration Discovered** in January 2024.
- **Project Goals:**
 - Assess the current impact of the Mineral Exploration industry in the province.
 - Explore the potential for the sector to contribute to economic reconciliation, decarbonization and Manitoba's economy.



Project Partners

As the recipient of the Manitoba Mineral Development Fund (MMDF), the MPDA would like to acknowledge the generous sponsors of our 2024 Exploration Discovery study. This initiative received funding from the Manitoba Chambers of Commerce, the Government of Manitoba through the MMDF, and the Communities Economic Development Fund Manitoba (CEDF).



FUNDING



Project Design

1 SECTION

Exploration Discovered Project Design

Focus	Description		
ONE Objective	<p>The objectives of the Exploration Discovered Initiative were:</p> <ol style="list-style-type: none"> 1. To illustrate the effects of mineral exploration on local communities within the supply chain network of Manitoba; 2. To highlight Indigenous-affiliated participation and opportunity for economic reconciliation; 3. To gain a better understanding of the variety of Vendors supporting the mineral exploration sector, and their geographic distribution; and, 4. To connect Manitoba's resource potential with Canada's Critical Mineral ambitions. 		
TWO Data Collection Methodology	Description of Process		Government Sources
	<p>A four-part process was used in the Exploration Discovered initiative:</p> <ol style="list-style-type: none"> 1) Survey of MPDA's ~ 100 members achieving a 25% participation rate. The survey gathered insights on confidence and planned investments for 2024. A semi- structured approach, incorporating a blend of open-ended and closed survey questions was used. 2) Supply chain analysis of expenditures made in 2022 by junior and senior exploration companies and service firms representing projects at all stages, including early-stage and advanced mechanized exploration. 3) Review of non-commercial Manitoba Mineral Development Fund (MMDF) participation data 4) Review of publicly available data and Federal and Provincial Government reports 		<p>Government data sources included</p> <ul style="list-style-type: none"> • Government of Canada: Canada's Critical Mineral Strategy • Government of Manitoba: Critical Mineral Strategy • Government of Manitoba: Manitoba Mining, Exploration and Geoscience 2024 –2025 • Government of Manitoba: Manitoba-First Nations Mineral Development Protocol • IEA50: Critical Minerals Data Explorer • MMDF: Funding Northern Possibilities • NRCan: Canadian Critical Mineral Infographic (February 2024) • NRCan: Mineral Exploration and Development, Data Tables • Statistics Canada. Table 14-10-0202-01 Employment by industry, annual • Statistics Canada. Table: 34-10-0035-01, Capital and repair expenditures by industry and geography
THREE Survey Structure	<p>The MPDA ED survey was categorized into three primary dimensions, like a checklist that together creates a full picture of Manitoba's mineral sector's outlook for the industry. The three dimensions were</p> <ol style="list-style-type: none"> 1. Climate and Community Investment 2. Indigenous Participation 3. Industry Confidence and Expectations for 2024 		
FOUR Timeline	<p>The MPDA data collection survey was distributed by email, social media promotion and in person interviews from December 20, 2023, to March 31, 2024. Preliminary results were presented at the MPDA Reconciliation Gala in Winnipeg on March 21, 2024.</p>		
FIVE Framework	<p>Exploration Discovered was aligned with the best practices in Indigenous and local content reporting, as expressed by the ambitions of the Mining Association of Canada's 'Towards Sustainable Mining' standard and the 'National Indigenous Economic Strategy for Canada'.</p>		

Key Insights

2 SECTION

Key Insights



- 1 Exploration Discovered (ED) captured **~\$176M** in mineral exploration and mining supply chain expenditures in Manitoba in 2022 accounting for **25%** of Manitoba's total mineral exploration and mining expenditures during 2022.
- 2 More than **50 municipalities** across Manitoba have a mineral exploration and mining sector supply chain. The **top three** municipalities based on count of reported Vendors in ED are: **Winnipeg, Flin Flon** and **Snow Lake**.
- 3 **60%** of ED survey participants reported having an **Agreement** with an **Indigenous Nation** or organization as part of a mineral exploration project.
- 4 The diversity and characteristics of the mineral exploration supply chain was modelled. **Supporting Services** was the most accessed Vendor category with **Equipment Rentals & Supplies** being the most procured sub-category of Vendors.
- 5 **Winnipeg** had the highest mineral exploration and mining supply chain expenditure reported with **46%** of total provincial expenditure directed to Vendors in the capital city, revealing the province-wide impact of the sector. The top category reported by Winnipeg Vendors was **Equipment, Rentals and Supplies**.
- 6 ED surveyed Mineral Exploration companies to determine what factors would most positively impact mineral exploration investment in Manitoba. **25%** of respondents said **enhanced efficiency and effectiveness of permitting processes** would promote investment thereby expediting Manitoba mineral exploration projects that contribute to a low carbon future.

The Global and Canadian Context

3 SECTION

The Global Challenge

- Since the Intergovernmental Panel on Climate Change's (IPCC) Special Report on Global Warming (2018), many countries have enhanced and accelerated greenhouse gas (GHG) emission reduction targets to help limit the global temperature rise to 1.5°C above pre-industrial levels.
- Canada adopted an ambitious new target, committing to a GHG emissions reduction of 40-45% below 2005 levels by 2030 and to achieve net-zero emissions by 2050.
- Meanwhile, the Government of Manitoba set ambitions in October 2023 to ***'work towards making (our) energy grid net-zero by 2035'*** and to ***'create a roadmap to meet net-zero targets by 2050.'***



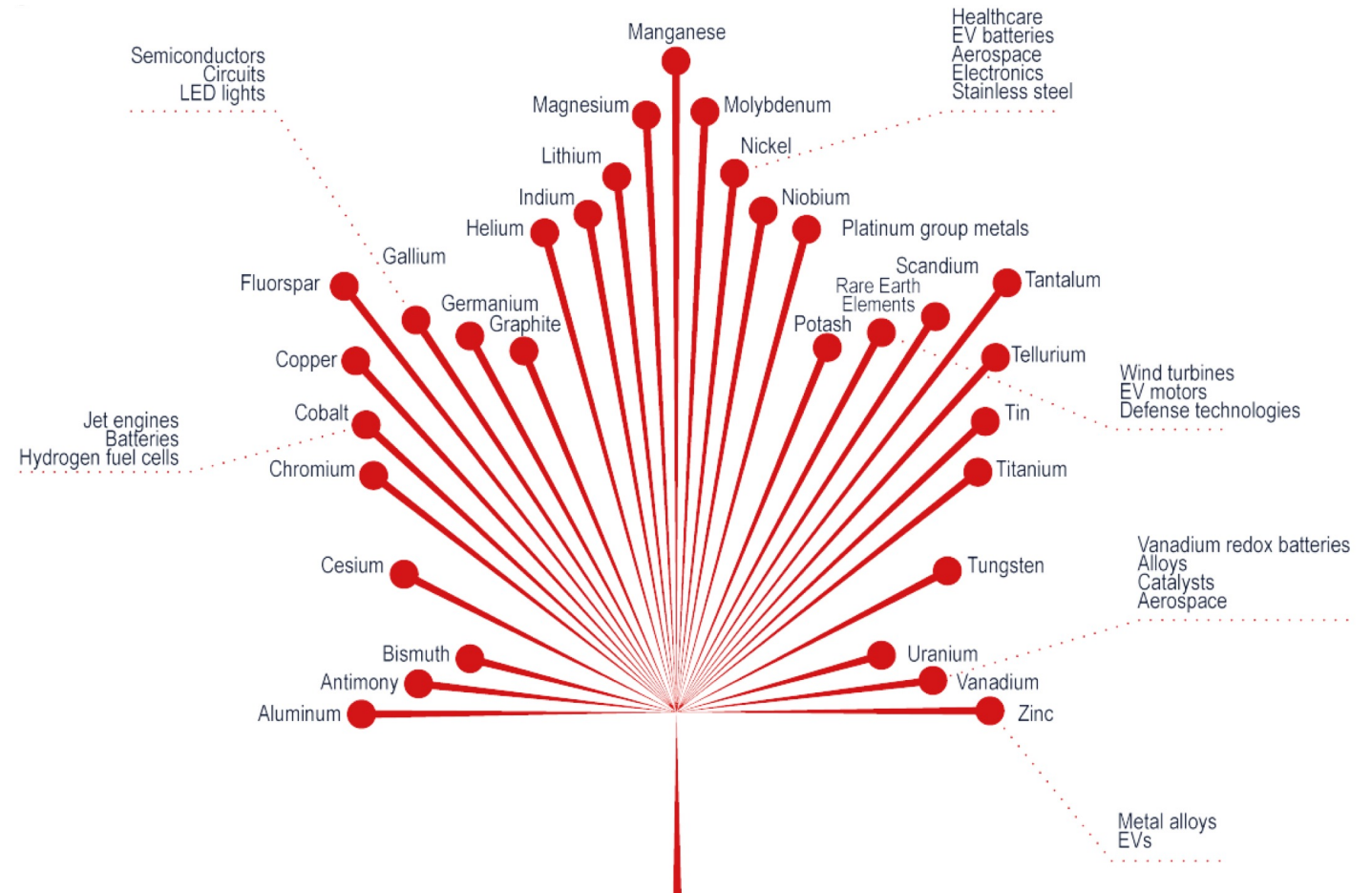
Accelerated Clean Energy Drives Up Mineral Demand Globally

- The International Energy Agency (IEA) World Energy Outlook report, '**The Role of Critical Minerals in Clean Energy Transitions**' announced that since 2010, the average quantity of minerals needed for a new unit of power generation capacity has increased by **50%** as the share of renewables in new investment has risen.
- The minerals **Manitoba** discovers and produces, backstopped by Manitoban businesses, are essential to the green transition. According to the IEA, at **least 30 times as much nickel** and other key minerals may be required by the electric car industry by 2040 to meet global climate targets.
- Solar photovoltaic (PV) plants, wind farms and electric vehicles (EVs) require more minerals to build. For instance, a typical electric car requires six times the mineral inputs of a conventional car and an onshore wind farm requires nine times more mineral resources than a gas-fired plant.



Canada Responds with the *Canadian Critical Mineral Strategy*

- In December of 2022, Canada announced **\$3.8B** to be put towards its Critical Minerals Strategy to seize a generational opportunity for a clean, inclusive and homegrown mineral exploration industry.
- The strategy aims to position Canada as a top global supplier and advance the development of the mineral exploration industry. In addition, the Canadian Government announced **\$1.5B** to support critical mineral projects.
- In total, **31** minerals have been identified as critical to Canada's future due to their role in economic security.



Manitoba can Lead the *Canadian Critical Mineral Strategy*

29

Of the **31** critical minerals on Canada's Critical Mineral List, **29** are in the province of Manitoba.

Manitoba has an **opportunity** to be a significant contributor to the critical and strategic minerals of Canada and the world. Along with having 29 of Canada's critical minerals, Manitoba's **access to a deep-water port** gives the province the potential to discover, extract, process and export critical minerals while building a **skilled, well-paid local workforce**.

Canadian Critical Minerals List	Minerals In Manitoba
Aluminum	No
Antimony	✓
Bismuth	✓
Cesium	✓
Chromium	✓
Cobalt	✓
Copper	✓
Fluorspar	✓
Gallium	✓
Germanium	✓
Graphite	✓
Helium	✓
Indium	No
Lithium	✓
Magnesium	✓

Canadian Critical Minerals List	Minerals In Manitoba
Manganese	✓
Molybdenum	✓
Nickel	✓
Potash	✓
Platinum Group Element	✓
Rare Earth Metals	✓
Scandium	✓
Tantalum	✓
Tellurium	✓
Tin	✓
Titanium	✓
Tungsten	✓
Uranium	✓
Vanadium	✓
Zinc	✓

Unlocking the Potential

Manitoba's World Class
Decarbonization Resources

4 SECTION

Scaling Manitoba's Mineral Exploration for Clean Energy Demand

The minerals Manitoba discovers and produces, such as **lithium, nickel, gold, zinc, copper, and silica** backstopped by Manitoban businesses, are essential to decarbonization and support a realistic transition today.



EVs & Batteries

Copper, Silver, Nickel, Silica



Grid Infrastructure

Copper, Silver



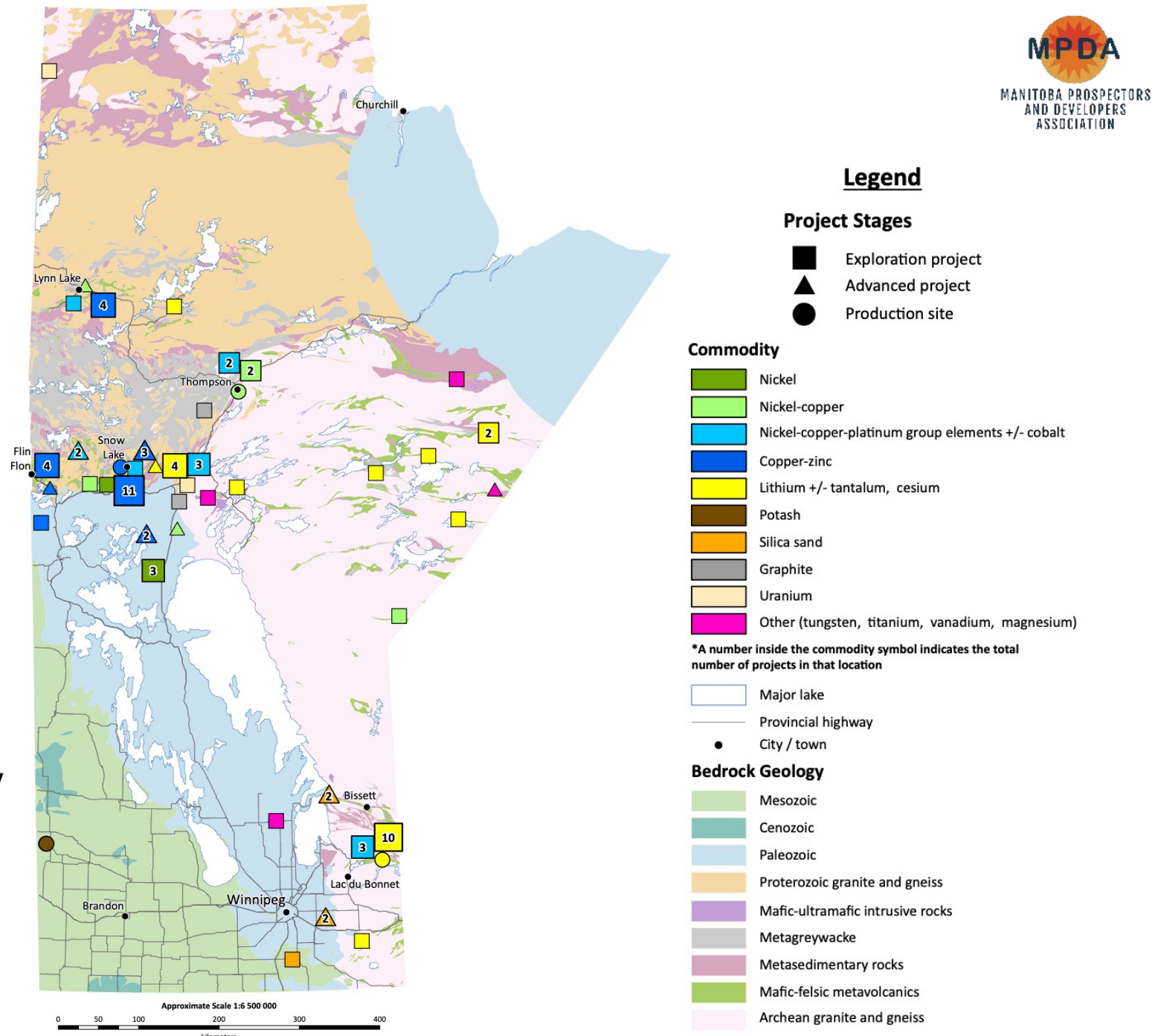
Solar Panels & Specialized Technology

Copper, Silver, Gold, Silica



Wind Turbines

Copper, Zinc



A Commitment to Mineral Discovery and Economic Benefits in Manitoba

Beyond Manitoba's rich geological landscape, the province offers a robust exploration environment, bolstered by the MMDF, CEDF, collaborative industry partners, Indigenous Nations, engaged communities, and a skilled workforce.

The Manitoba Mineral Development Fund

The Manitoba Mineral Development Fund has supported more than **60** Mineral Exploration and Mining economic development projects since 2020.



Was awarded to more than **15** Mineral Exploration and Mining companies in 2022 from the MMDF program.



Was the top **commodity** for mineral exploration in Manitoba during 2022.



Key Insights From Supply Chain Analysis

iTOTEM conducted a detailed supply chain assessment based on the annual expenditures of early-stage to advanced mechanized exploration, representing Manitoba's mineral exploration industry. The year in scope was **2022**.

Winnipeg

Was the most accessed **municipality** for Vendors by the participating Exploration Discovered members over the study period of 2022.

**~490
Vendors**

Exploration Discovered found that participating MPDA members supported more than 490 **Vendors** in Manitoba during 2022 spanning across the province.

~\$176M

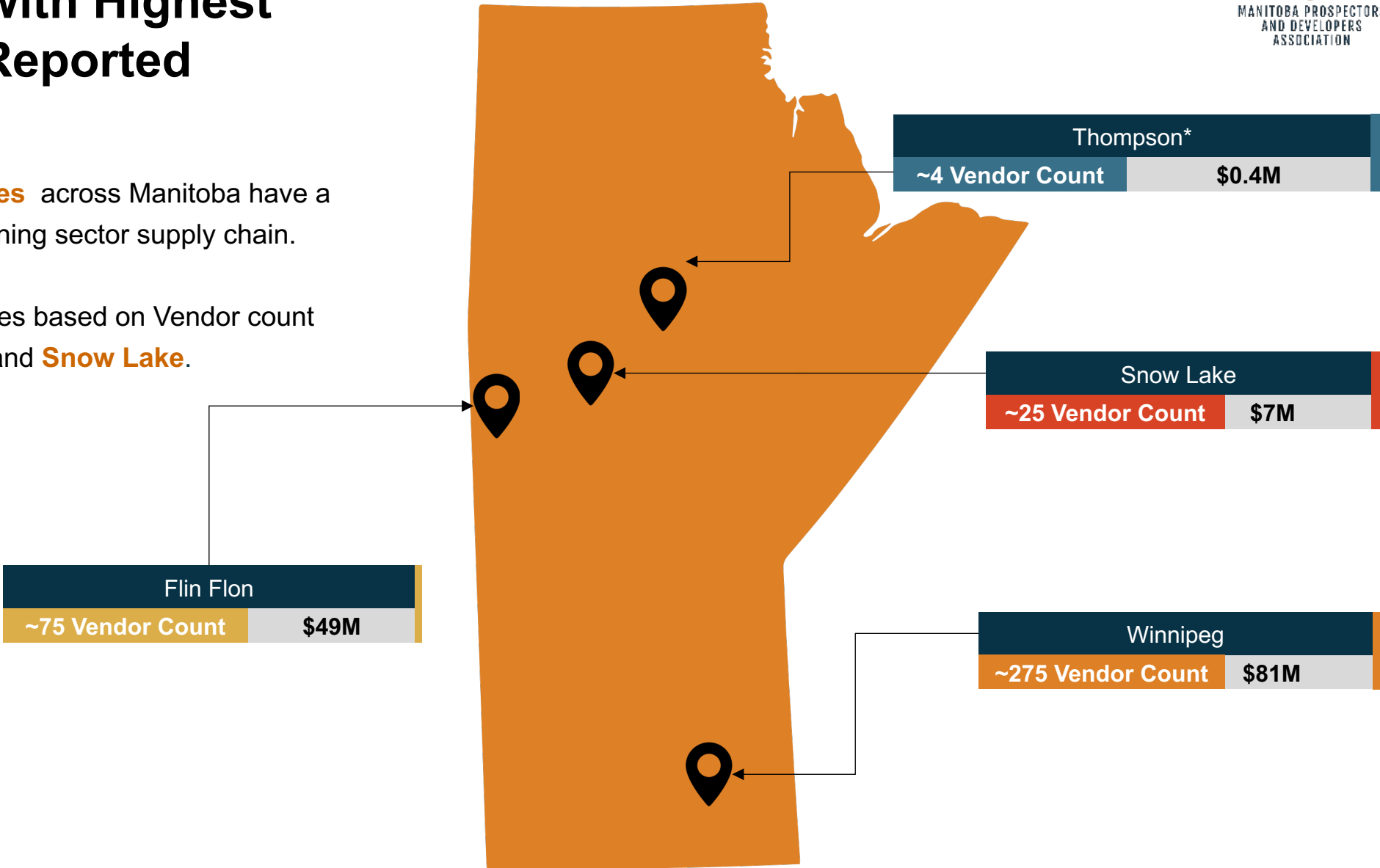
Exploration Discovered participating MPDA members reported ~\$176M **supply chain expenditures in Manitoba** in 2022.



Municipalities with Highest Vendor Count Reported

More than **50 municipalities** across Manitoba have a mineral exploration and mining sector supply chain.

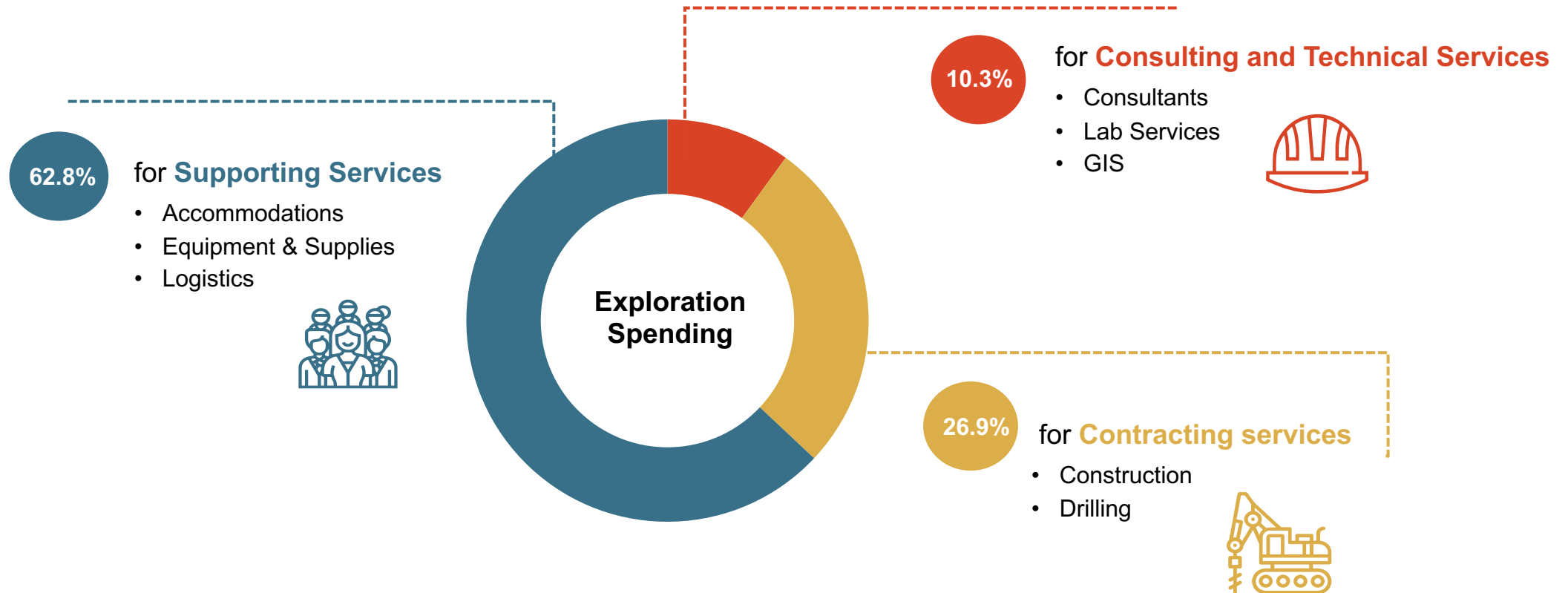
The **top three** municipalities based on Vendor count are: **Winnipeg, Flin Flon** and **Snow Lake**.



* Incomplete Data Set

Mineral Exploration Supplier Type by Count

The categorization of Vendor Services in the exploration industry revealed that **Supporting Services** was the most accessed Vendor Category and **Equipment Rentals & Supplies** was the most used sub-category of Vendors in 2022.

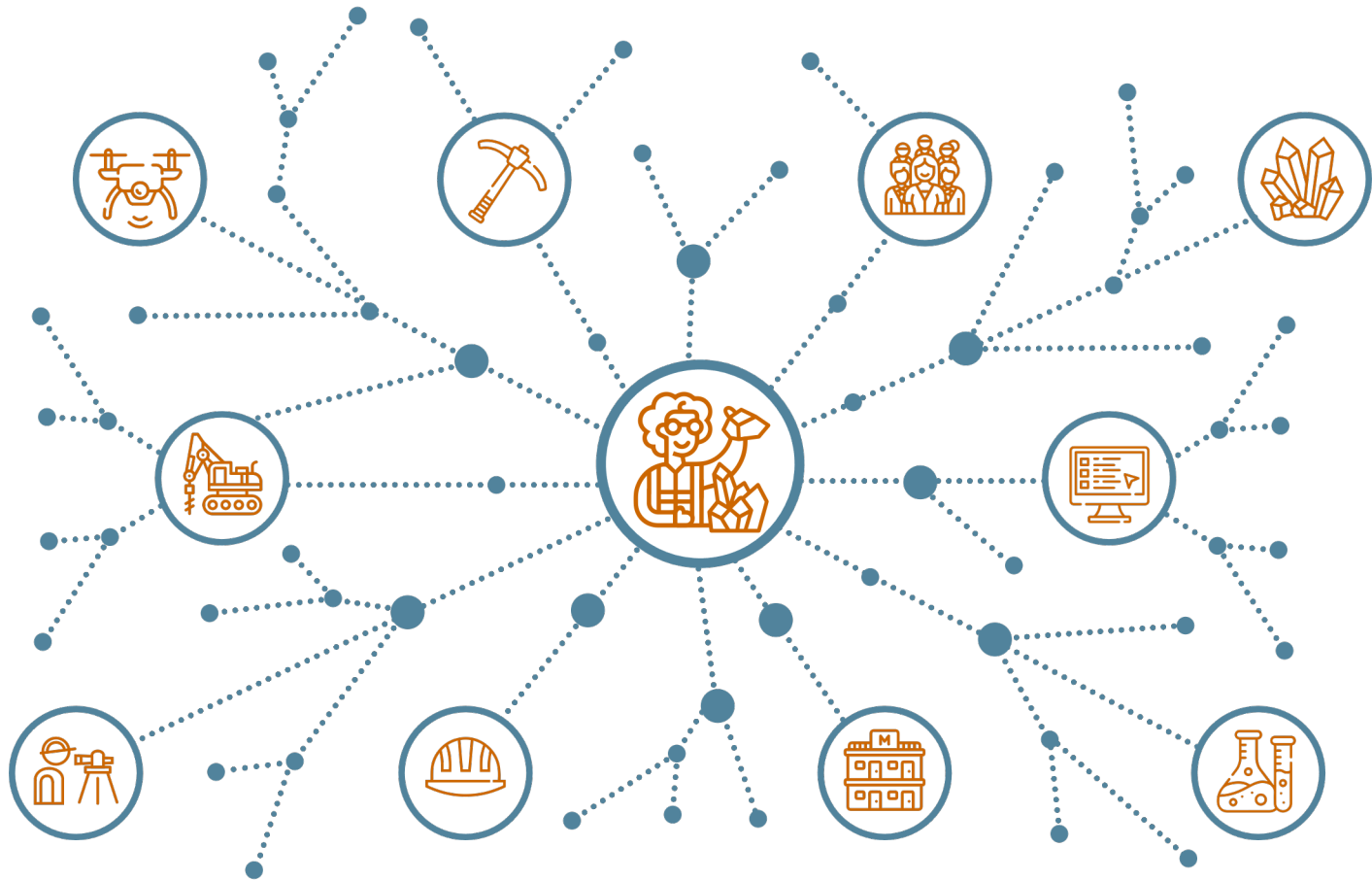


Top Municipality by Supplier Type

Top Municipalities by Distribution of Vendor Count

Supply Chain Category	Top Municipality
Consulting & Technical Services	Winnipeg
Technical Consultants	Winnipeg
GIS Services	Flin Flon
Lab services (Analysis)	Winnipeg
Contractors	Winnipeg
Construction & Labour	Winnipeg
Drilling	Winnipeg
Other	Winnipeg
Support Services	Winnipeg
Accommodations & Camp supplies	Winnipeg
Administrative Services	Winnipeg
Equipment Rentals & Supplies	Winnipeg
IT & Telecommunication Services	Winnipeg
Logistics	Winnipeg
Safety & Training	Flin Flon

In **50 Manitoba municipalities**, Mineral Exploration and Mining companies have engaged with an average of **10 Vendors** per community, showcasing substantial local supply chain involvement across the province.



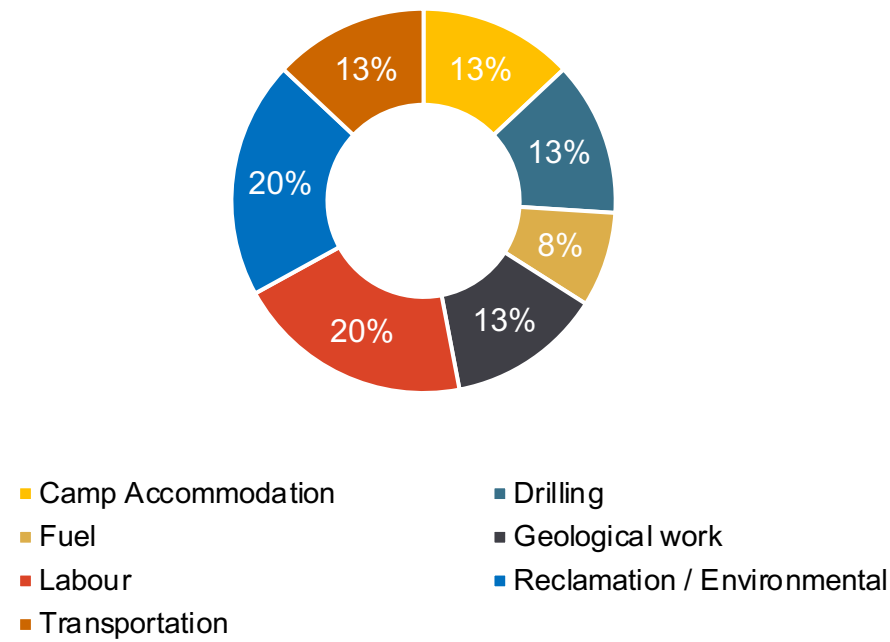
Mineral Exploration: A Voice of Confidence in Manitoba

5 SECTION

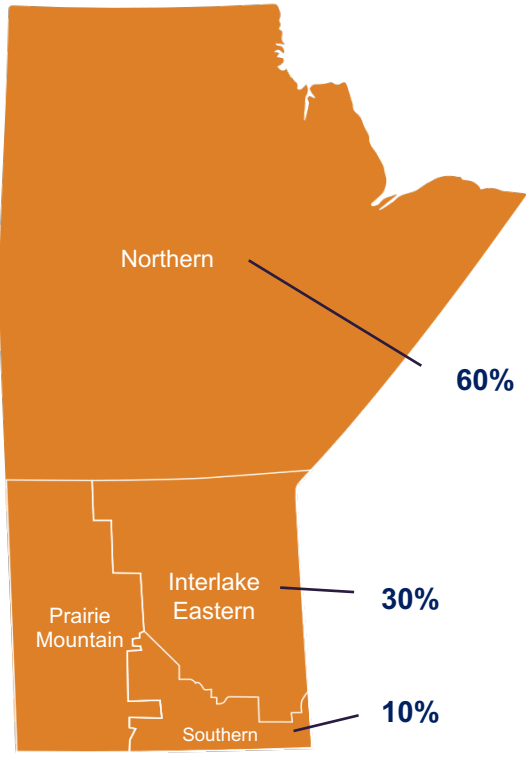
Expectations for 2024

Exploration Discovered surveyed MPDA's ~ 100 members achieving a 25% participation rate. A semi-structured approach, incorporating a blend of open-ended and closed survey questions was used. The survey gathered information on investment confidence and plans for 2024.

Profile of Survey Participants by Mineral Exploration Vendor Type



Planned Regions of Mineral Exploration Investment in 2024



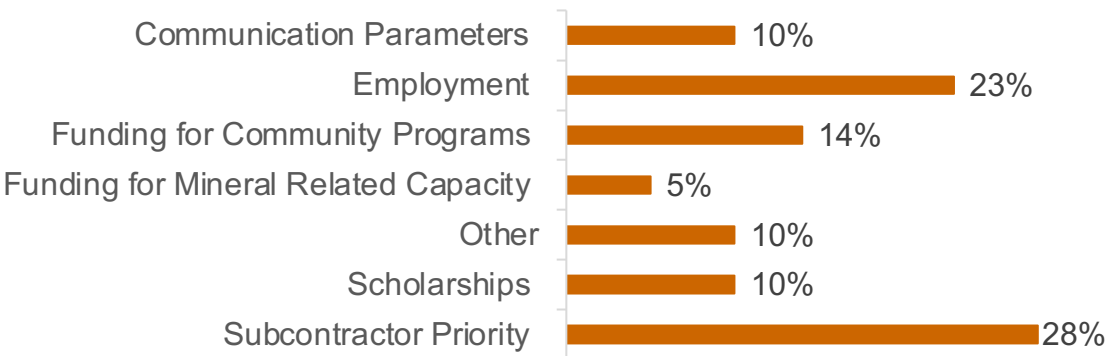
The survey revealed that **50%** of exploration projects are expected to have a spend greater than **\$100K** per project in 2024 with **60%** of projects happening in the **Northern** region of the province.

Indigenous Participation

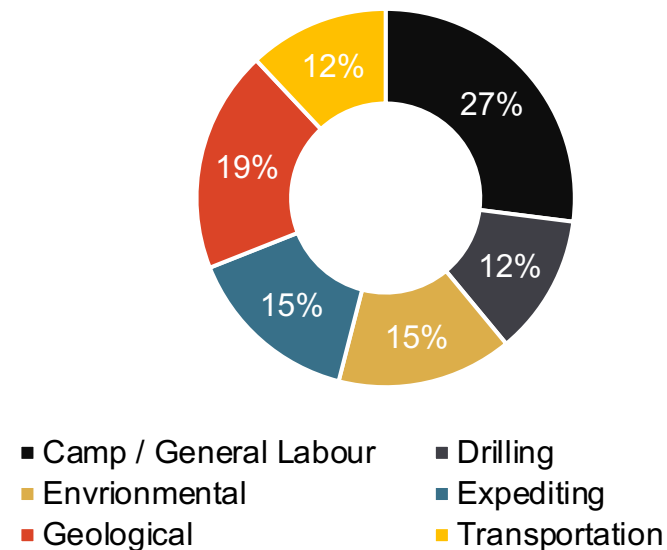
Exploration Discovered surveyed both Mineral Exploration companies and their Vendors regarding Indigenous partnerships and collaboration. This section reveals the areas of focus by each group.

60% of survey participants, including both Mineral Exploration companies and their Vendors, reported having a working agreement with an Indigenous group.

The Types of Collaboration Planned Between Indigenous Groups and Exploration Vendors in 2024



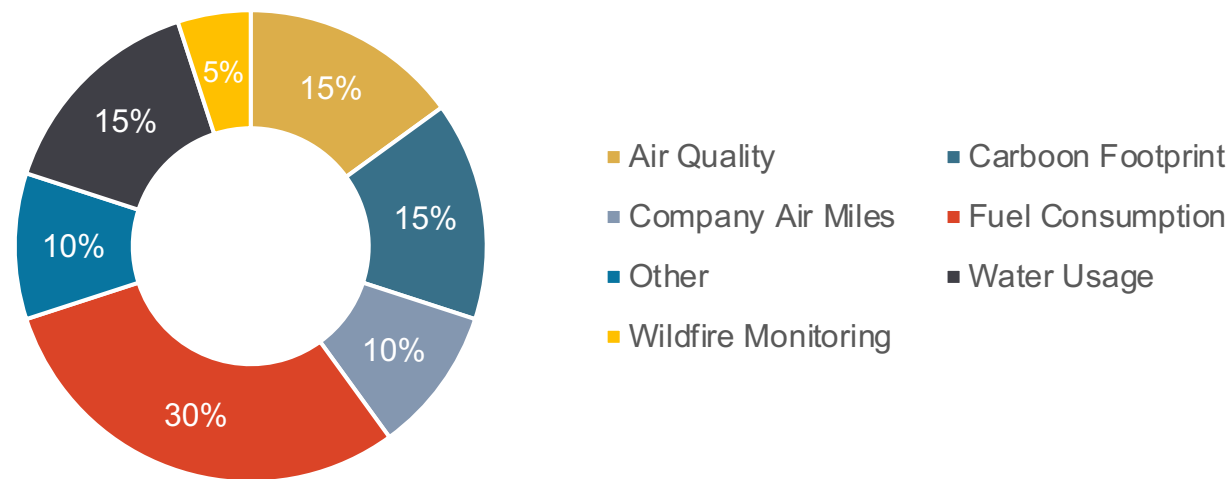
Focus of Agreements Between Indigenous Groups and Mineral Exploration Companies in 2024



Camp / General Labour is the top area of collaboration planned in 2024 between Indigenous Groups and Exploration companies. **Subcontracting** is the top area of collaboration planned between Indigenous Groups and Mineral Exploration Vendors.

Climate & Community Impact

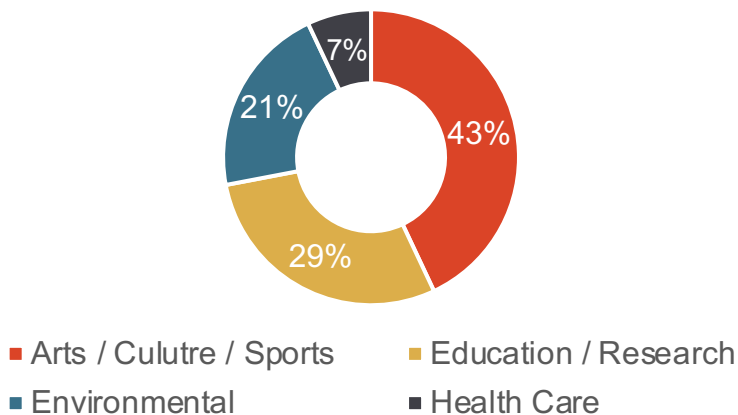
Areas of Anticipated Climate Monitoring by Exploration Companies and Vendors in 2024



Fuel Consumption is the top area of anticipated environmental monitoring planned in **2024**.

73% of Exploration companies and the supply chain reported contributing to community programs with **Arts, Culture & Sports** expected to be the most supported category of community investments in 2024.

Anticipated Community Investments in 2024



Our People

6 SECTION

Foremost Lithium

As the world shifts towards sustainable energy and more specifically electric transportation, lithium-ion batteries are powering the transformation. At the forefront of the electrification revolution, is Foremost Lithium Resource & Technology, conducting lithium hard rock exploration in Manitoba. Its Lithium Lane Projects in Snow Lake are pivotal in meeting the growing demand for ethically sourced battery-grade lithium hydroxide, supporting the growing global focus on decarbonization and the transition towards electric vehicles.



Foremost Lithium is well-placed geographically offering easy access to North American battery and EV manufacturing centers. This geographic advantage is crucial given the legislative push in regions like Manitoba to boost the EV sector. The company's innovative exploration and development tactics, including advanced technologies like UAV-borne magnetic surveys, position Foremost Lithium as a significant contributor to the Manitoban economy and the future of clean energy.

Manitoba, with its rich geological landscape, presents an opportunity for lithium exploration. While the province is not traditionally known for lithium deposits, the hard rock pegmatites in the Snow Lake area are proving to be a promising frontier. The exploration is not just about tapping into new resources but also about understanding the broader implications of lithium commodification on the local and provincial economy.

Mark Fedicow, Geoscience Advisor at Foremost Lithium emphasizes the importance of lithium exploration for Manitoba's economy. "Electrification of our transportation system depends on the exploration and development of lithium and other critical metals documented from and produced historically in the Province of Manitoba. If the extraction of these resources is allowed to proceed then we can look forward to significant benefits in the form of employment and development opportunities in Snow Lake and elsewhere in Manitoba's northern communities where natural resource development is often the only significant source of revenue generation."

The *Canada Critical Mineral Strategy* emphasizes the vital role lithium plays as one of the six minerals crucial to Canada's economic growth. As the world transitions to a low-carbon economy there is an increasing demand for lithium-ion batteries and renewable energy storage. To meet this demand Foremost Lithium is positioning themselves at the forefront of this growing opportunity by focusing on lithium exploration in Manitoba, setting the province on the path to becoming a leader in lithium exploration and supporting the province's overall economic development.



Foremost Lithium, established in **Vancouver** in **2011**, focuses on lithium exploration. The company began its exploration activities in Manitoba in 2017, focusing on **Snow Lake** in **Northern Manitoba**. Driven by lithium's potential to transform the global energy sector, the company is focused on exploration and growth on its 4 core projects in the region.

518 Drilling



In 2021, 518 Drilling emerged as both a new contender in the diamond drilling industry and a beacon of inclusivity and community engagement in Manitoba with its deep commitment to creating opportunities and fostering growth within the industry and in the communities it touches.

Central to 518 Drilling's ethos is its dedication to cultivating meaningful relationships and sharing prosperity within Indigenous communities. A testament to this commitment is its recent initiative to educate and empower Indigenous communities by hosting a full-day training session at the Central Canada Mineral Exploration Convention (CCMEC). Members of Indigenous communities were able to learn about the mineral exploration industry and the work being done in diamond drilling.

Furthermore, participants who completed the session, with the support of 518, went on to pursue a promising career in the mineral exploration industry. 518's inclusivity is most effectively demonstrated by its diverse workforce, "it's gratifying to see the level of interest and participation from the Indigenous community in this sector. We are proud to have 20% of our workforce represent Métis and First Nations individuals from communities including Haluwater and Red Sucker Lake." – Kevin Norberg

518 Drilling recognizes the importance of community benefits beyond employment, as evidenced in their efforts to participate in and sponsor events like the MPDA Golf Tournament Gala .



To further maintain and nurture community relationships, 518 team members regularly engage with Indigenous communities by hosting events such as bingo, community meals, and clothing / item donations. As a result, the community stays connected to the company and the mineral exploration industry at large.

Looking to the future, 518 Drilling remains committed to deepening its work with communities in Manitoba. To ensure that future growth is sustainable and beneficial for all stakeholders, 518 Drilling is continuing its dialogue with Indigenous communities to understand and address environmental concerns and ensure the benefits of the mineral exploration industry are shared.



Established in **2021**, 518 Drilling is a **diamond drilling** service provider based in Winnipeg. While actively engaging in exploration, the company specializes in offering high-quality drilling services to exploration firms throughout the province. Notably recognized for fostering **Indigenous participation**, 518 Drilling plays a crucial role in Manitoba's mineral exploration sector.

T2 Metals



T2 Metals, an emerging copper exploration company in North America, is making significant strides with its flagship Sherridon project in Manitoba. The project focuses on exploring the untapped copper resources while prioritizing environmental stewardship and community collaboration.

From the onset, T2 Metals recognized the intrinsic value of the Sherridon project, buoyed by its advantageous location, robust infrastructure, and the potential to transition from exploration to a full-fledged mine. With a clear vision and commitment to diligent exploration, T2 Metals has been pivotal in navigating the project through its critical phases of drilling and exploration.

T2 Metals shines with respect to the local communities and the environment. The company's engagement is highlighted by its partnership with Floyd North, someone who has built a career fostering relationships and opportunities with Indigenous communities, particularly with the Mathias Colomb Cree Nation. The partnership has facilitated employment opportunities and spearheaded the establishment of a sawmill operation within the community. The operation is an example of T2 Metals' dedication to empowering local communities, fostering economic independence, and nurturing sustainable growth.



"I feel very lucky to be working in jurisdictions where there are great communities leading with productive relationships and partnerships" shares T2 Metals senior consultant, Jamil Sader, reflecting on the importance of building lasting relationships. Through Floyd North, T2 Metals has engaged in a cultural learning experience resulting in a deeper understanding of the community's traditions and an appreciation for their culture and perspective.

Environmental consciousness plays a significant role in T2 Metals' operational philosophy. Mindful of the historical environmental challenges in the Sherridon area, the company has adopted a meticulous approach to minimizing its ecological footprint from securing the necessary permits to engaging in transparent communication with the local communities through events such as town hall meetings. As T2 Metals continues to navigate the balance between exploration and environmental stewardship, the company remains steadfast in its commitment to leaving a minimal footprint and a harmonious coexistence with the local communities.

T2 Metals, an exploration company located in **Northern** region of Manitoba, exploring **for copper gold, and zinc** deposits. With head offices located in Vancouver BC. T2 Metals work in Manitoba is within the **Sherridon community**, as the company works with the local communities to advance exploration projects and uncover valuable mineral resources.

Appendices

7 SECTION

The Data and Processing

Appendix A

Received data from each participating MPDA member for each of their Vendor spend for their operations in Manitoba with vendor names, city, cost code (account description), date of spend etc.



Data Categorisation

- Business Segments
- Community Spend Categories
- Identify all Indigenous spends and associated First Nations for respective Vendors
- Supply Chain Sub-Categories & Master Categories



Data Cleaning

- Identify and remove duplicate Vendor names
- Identify and remove duplicate City names
- Normalize Vendor names
- Normalize City Names
- Modify Vendor City to HO for utilities and similar service companies
- Correct Vendor Province
- Identify and Exclude spends for locations out of scope
- Identify and Exclude spends for period out of scope
- Identify and Exclude non supply chain spends as exclusions



Each spend was tagged by

- Vendor's Region of the Province
- Indigenous Affiliation
- Supply Chain Sub-Categories & Master Categories
- Community Investment Categories

Methodology

Appendix B

Focus Area	Assumptions
Categorization	<ul style="list-style-type: none"> All Vendor expenses were tagged to the mineral exploration supply chain based on 12 goods, materials, and service subcategories in accordance with the account descriptions provided by the members in their data. These 12 categories were further grouped together into three master supply chain categories,
Geographic References	<ul style="list-style-type: none"> Vendors were tagged by municipality or unincorporated community according to the PCCF Dataset from Canada Post.
Limitations and Notes	<ul style="list-style-type: none"> iTOTEM relied on the accuracy of the information provided by MPDA and MPDA ED participants regarding their supply chain and community investment expenditures and the respective locations of the Vendors in Canada. However, the same has been validated using credible data sources like PCCF dataset from Canada Post.
Quality Assurance Data Changes and Exclusions	<ul style="list-style-type: none"> A QA process was run to remove duplications, standardize spellings and apply exclusions. All the spends relating to taxes/levies/Government fees were excluded from the analysis iTOTEM ran a validation process with the MPDA and MPDA participants to assure the data veracity.
Rounding and Margin of Error	<ul style="list-style-type: none"> \$ were rounded to the nearest million or thousand. Counts were rounded down to nearest 5s and 10s. It's estimated a margin of error of up to 1% for the unique count of Vendors provincewide.
Unique Vendor Counts	<ul style="list-style-type: none"> A Vendor can be tagged in more than one municipality, but this does not change the total number of unique Vendors in the province, or Canada nor does it change the total number of unique Vendors in a municipality. The unique Vendor count means the Vendor is counted once. In situations where the same Vendor operated in more than one location, but spelling was recorded differently, the spelling was standardized, and duplications excluded. The locations of the Vendors were extracted from postal codes; postal codes were verified with Canada Post. In situations where a postal code was not provided, an additional validation process, involving google map API base in-house application, was applied; failing this, the Vendor location is part of the margin of error.

Methodology

Appendix C

Focus Area	Assumptions
Community Investment	All the expenses that are carried out for the charitable and sponsorship purposes that are beneficial to the community.
Indigenous-Affiliated Vendor	<p>According to Statistics Canada, 'A business is considered Indigenous-owned if more than 50% of its shares are owned by Indigenous people—individuals who reported being First Nations (North American Indian), Métis or Inuk (Inuit); those who reported Registered or Treaty Indian status, registered under the Indian Act of Canada; or those who reported membership in a First Nation or Indian band.'</p> <p>Source: https://www.statcan.gc.ca</p> <p>Accordingly, for the ED the definition of Indigenous Peoples is applied, and the supply chain participation includes both majority and minority Indigenous business ownership structures ensuing commercial benefit. Without the ability to confirm majority ownership structure of each business, the SVR conservatively reports all Indigenous participation based only as being 'Indigenous-Affiliated'.</p> <p>Definition - All the Vendors that are or owned by Indigenous people — individuals who reported being First Nations (North American Indian), Métis or Inuk (Inuit); those who reported Registered or Treaty Indian status, registered under the Indian Act of Canada; or those who reported membership in a First Nation or Indian band, irrespective of the ownership structure of the Vendors being majority owned.</p>
Vendor	Contractors/Consultants and other professionals, materials as well as goods and service providers to the member companies of Manitoba's Prospectors & Developers Association (MPDA)
Province & Territories Standard Abbreviations	<p>Statistics Canada has been used as a resource for standardized abbreviations for Provinces and Territories in ED.</p> <p>Source: Dictionary, Census of Population, 2021 - Table 1.8 Abbreviations and codes for provinces and territories, 2021 Census</p>

Supply Chain Categories

Appendix D

Category	Description
Consulting & Technical Services	
Consultants	Engineering, Environmental, Geological, Project Management, Regulatory Advisor
GIS Services	GIS Mapping, LiDAR Survey, Radiometric / Magnetics Survey, Remote Sensing, Satellite Surveyors
Lab Services (Analysis)	Assaying, Chemical Analysis, Geochemistry, Petrographic Services
Contractors	
Construction & Labour	Drill Pad Construction, Electrical Work, Field Building Construction
Drilling	Drilling Contractors & Support
Other	Media / News, Pest Control, Waste Management
Support Services	
Accommodations & Camp Supplies	Camp Electrical Work, Camp Setup, Cooks, Field / Mobile Offices, Groceries & Food Supplies, Hotel / Motel.
Administrative Services	Accounting, Financial Services, Insurance, Lawyers
Equipment Supply & Rentals	Auto parts, Core Boxes, Drilling Instruments, Forklifts, Misc. parts & equipment, Truck Rental, Water Monitors
IT & Telecommunications Services	Communications Equipment, Remote Internet, Satellite Phone, Software
Logistics	Couriers, Freight, Fuel, Helicopter Charter, Storage, Transportation, Trucking
Safety & Training	Cultural Monitors, First Aid Courses, Health & Fitness, Helicopter, Remote Medic

iTOTEM Analytics

- iTOTEM Analytics is an Indigenous-affiliated purpose-driven data science and communications firm with locations in British Columbia, New Brunswick and Texas. Since 2014, we've been helping businesses and not-for-profits simplify complex data to tell their story and improve operations.
- We specialize in mapping, visualizing and reporting climate, economic, social and innovation benefits by neighborhood or province. Using data science, machine learning, and AI, we categorize and visualize the positive impact of investments on Indigenous and local communities.
- Our team of data scientists, engineers, mathematicians, software developers, communications and policy specialists do the hard work for clients so they can focus on the priorities to move projects forward. We see the people behind the numbers and transform data into trust.

www.itotem.io



Government Sources

Government Sources	
Government of Canada: Canada's Critical Mineral Strategy	Critical-minerals-strategyDec09.pdf (canada.ca)
Government of Manitoba: Critical Mineral Strategy	The Manitoba Critical Minerals Strategy: Driving Sustainable Growth (gov.mb.ca)
Government of Manitoba: Manitoba Mining, Exploration and Geoscience 2024 –2025	Manitoba Mining, Exploration and Geoscience 2024–2025
Government of Manitoba: Manitoba-First Nations Mineral Development Protocol	Manitoba-First Nations Mineral Development Protocol Template
IEA50: Critical Minerals Data Explorer	https://www.iea.org/data-and-statistics/data-tools/critical-minerals-data-explorer
MMDF: Funding Northern Possibilities	Home - MMDF
NRCan: Canadian Critical Mineral Infographic (February 2024)	Canadian Mineral Exploration (canada.ca)
NRCan: Mineral Exploration and Development, Data Tables	Mineral Exploration and Development, Data Tables Natural Resources Canada (nrcan-rncan.gc.ca)
NRCan: Capital Expenditure	Capital Expenditures (canada.ca)
Correlation Sources	
StatsCan Table: 14-10-0202-01 , Employment by industry, annual ,	https://www150.statcan.gc.ca/t1/tbl1/en/tv.action?pid=1410020201
StatsCan Table: 34-10-0035-01, Capital and repair expenditures by industry and geography,	https://www150.statcan.gc.ca/t1/tbl1/en/tv.action?pid=3410003501